

- 1
- 2
- 3
- 4
- 5
- 6
- 7
- 8
- 9
- 10
- 11
- 12
- 13
- 14
- 15
- 16
- 17
- 18
- 19

VERSIONS

- Type **A**: without thread coating
- Type **GPC**: with thread coating

AISI 316Ti stainless Steel **A4**

Thread coating (Type GPC)

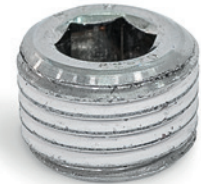
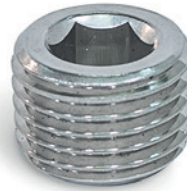
Precote 5

- white

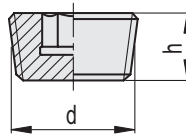
- Operating temperature -60 °C to +150 °C

INFORMATION

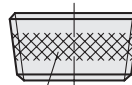
Threaded plugs DIN 906 are used to close bore holes with cylindrical internal thread. The tightness depends on the medium, pressure, temperature and material pairing. The type GPC with thread coating provides a higher degree of safety.



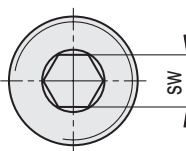
DIN 906-A



DIN 906-GPC



Thread coating (Precote 5)



DIN 906-A4-A



Code	Description	d	h	sw	⚖️
GN.22561	DIN 906-A4-M8X1-A	M8x1	8	4	2
GN.22563	DIN 906-A4-M10X1-A	M10x1	8	5	3
GN.22565	DIN 906-A4-M12X1,5-A	M12x1.5	10	6	6
GN.22567	DIN 906-A4-M14X1,5-A	M14x1.5	10	7	8
GN.22569	DIN 906-A4-M16X1,5-A	M16x1.5	10	8	10
GN.22571	DIN 906-A4-M18X1,5-A	M18x1.5	10	8	14
GN.22573	DIN 906-A4-M20X1,5-A	M20x1.5	10	10	17
GN.22575	DIN 906-A4-M22X1,5-A	M22x1.5	10	10	22
GN.22577	DIN 906-A4-M24X1,5-A	M24x1.5	12	12	30
GN.22585	DIN 906-A4-R1/8-A	R 1/8	8	5	6
GN.22583	DIN 906-A4-R1/4-A	R 1/4	10	7	7
GN.22591	DIN 906-A4-R3/8-A	R 3/8	10	8	15
GN.22581	DIN 906-A4-R1/2-A	R 1/2	10	10	21
GN.22589	DIN 906-A4-R3/4-A	R 3/4	12	12	40
GN.22587	DIN 906-A4-R1-A	R 1	12	17	63

DIN 906-A4-GPC



Code	Description	d	h	sw	⚖️
GN.22562	DIN 906-A4-M8X1-GPC	M8X1	8	4	2
GN.22564	DIN 906-A4-M10X1-GPC	M10X1	8	5	3
GN.22566	DIN 906-A4-M12X1,5-GPC	M12X1.5	10	6	6
GN.22568	DIN 906-A4-M14X1,5-GPC	M14X1.5	10	7	8
GN.22570	DIN 906-A4-M16X1,5-GPC	M16X1.5	10	8	10
GN.22572	DIN 906-A4-M18X1,5-GPC	M18X1.5	10	8	14
GN.22574	DIN 906-A4-M20X1,5-GPC	M20X1.5	10	10	17
GN.22576	DIN 906-A4-M22X1,5-GPC	M22X1.5	10	10	22
GN.22578	DIN 906-A4-M24X1,5-GPC	M24X1.5	12	12	30
GN.22586	DIN 906-A4-R1/8-GPC	R 1/8	8	5	6
GN.22584	DIN 906-A4-R1/4-GPC	R 1/4	10	7	7
GN.22592	DIN 906-A4-R3/8-GPC	R 3/8	10	8	15
GN.22582	DIN 906-A4-R1/2-GPC	R 1/2	10	10	21
GN.22590	DIN 906-A4-R3/4-GPC	R 3/4	12	12	40
GN.22588	DIN 906-A4-R1-GPC	R 1	12	17	63

Accessories for hydraulic systems